

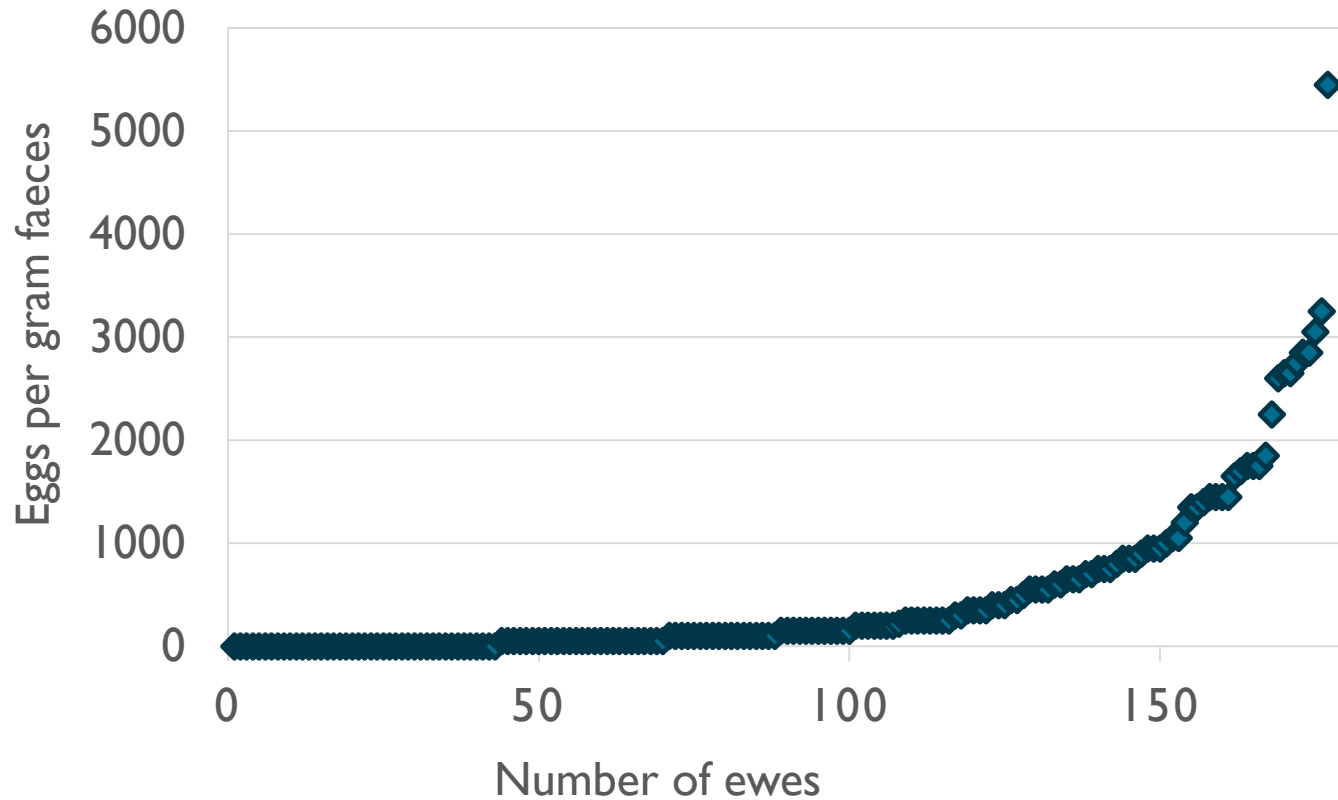


## Potentials of using milk performance data as indicator for Targeted Selective Treatment in Lacaune dairy sheep in Switzerland

Katharina Schwarz, Beat Bapst, Mirjam Holinger, Inga Schleip, Steffen Werne

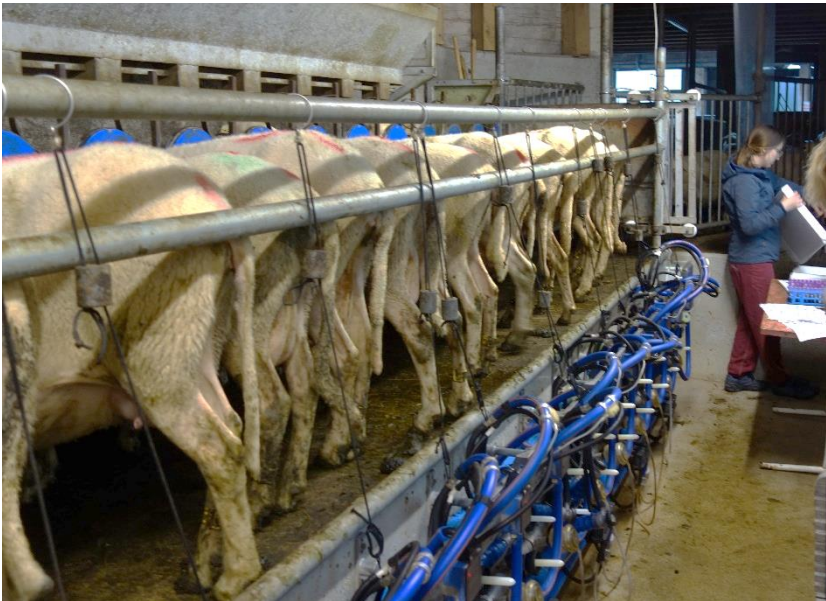
EAAP virtual Meeting 2020 - Dairy sheep and goat systems: new research in genes, nutrition and management

# Faecal egg count of ewes from a farm



# Data collection

- 1159 ewes, 15 farms
- Eggs per gram faeces (EPG)
- **Milk recording data**
- **FAMACHA Score**
- Blood sampling → **packed cell volume, genotyping**
- Proportion of *Haemonchus*

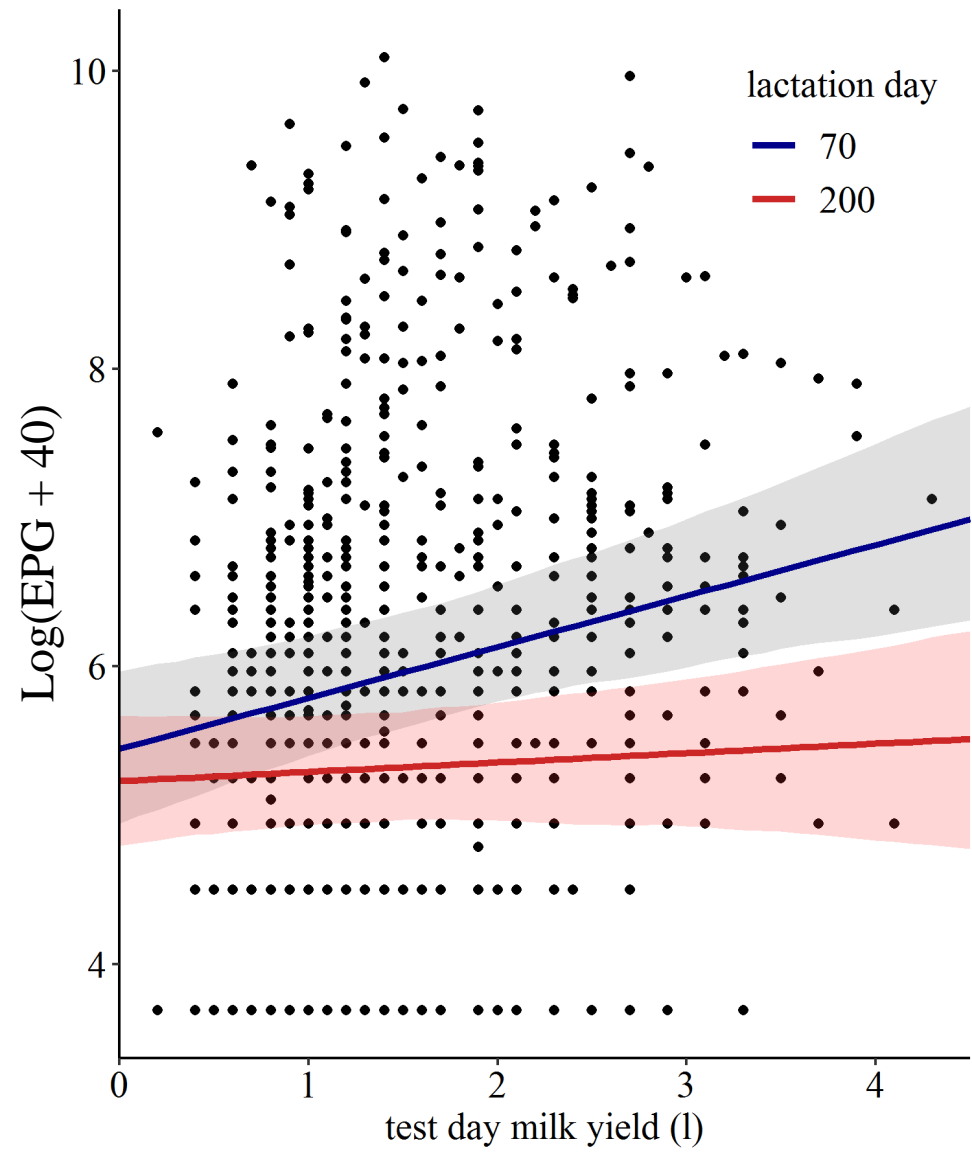


Faecal sampling

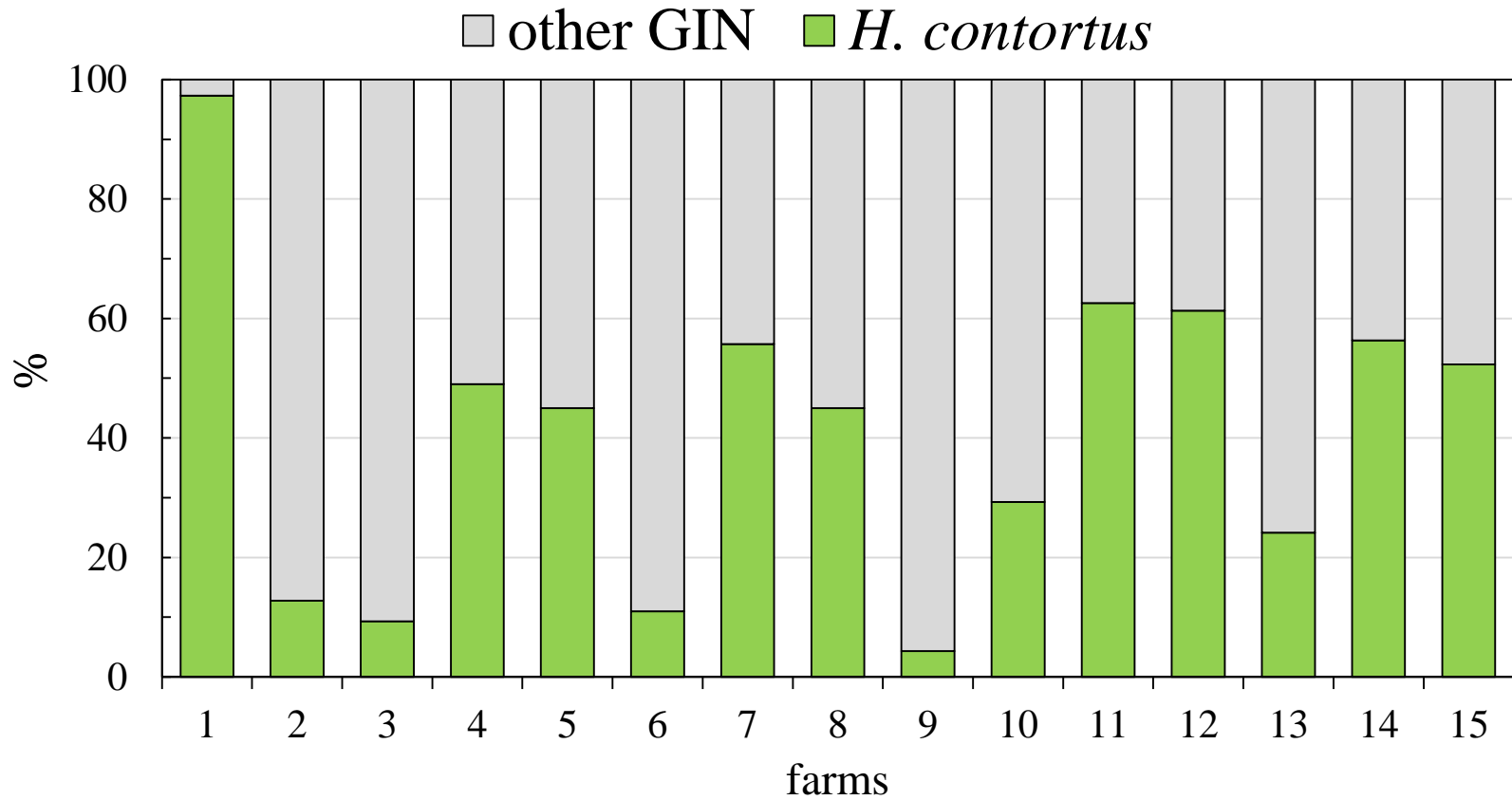


FAMACHA Score

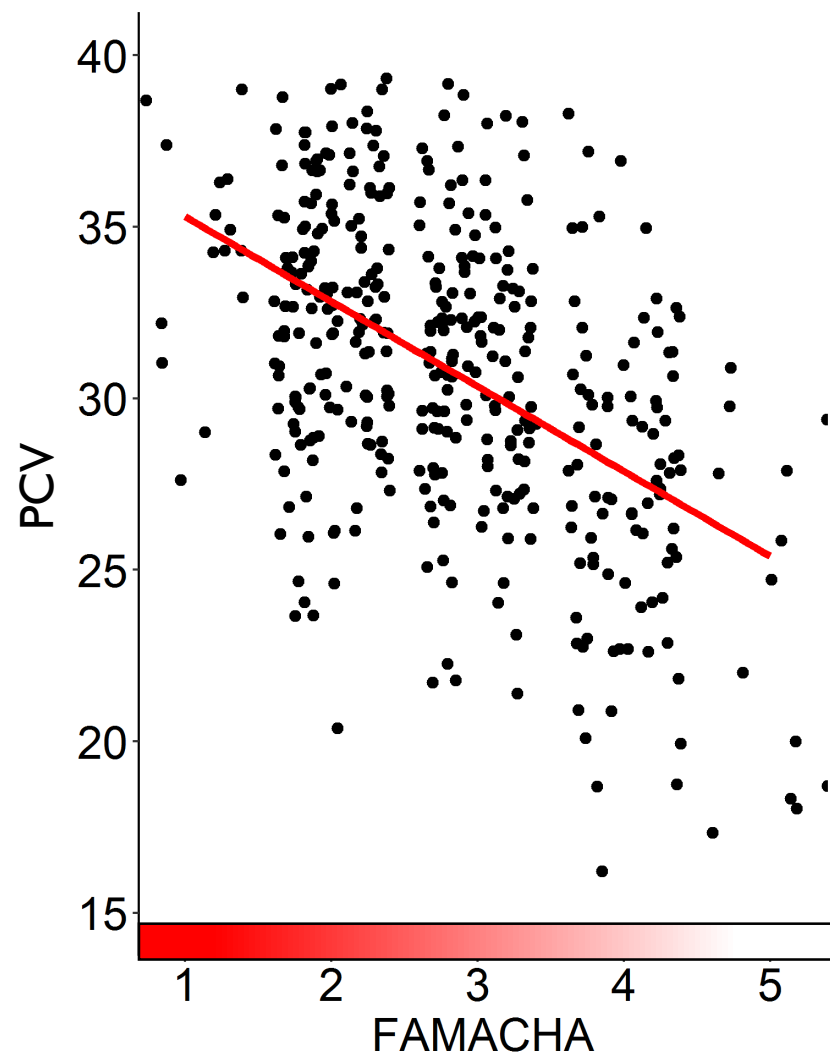
# Relation number of eggs and milk yield



## Haemonchus proportion on 15 farms



# Relation FAMACHA and packed cell volume



All farms  
 $r = -0.32$   
 $P < 0.001$

Farms with H.c.  $\geq 50\%$   
 $r = -0.48$   
 $P < 0.001$

# Relation of FAMACHA Score and FEC

All farms

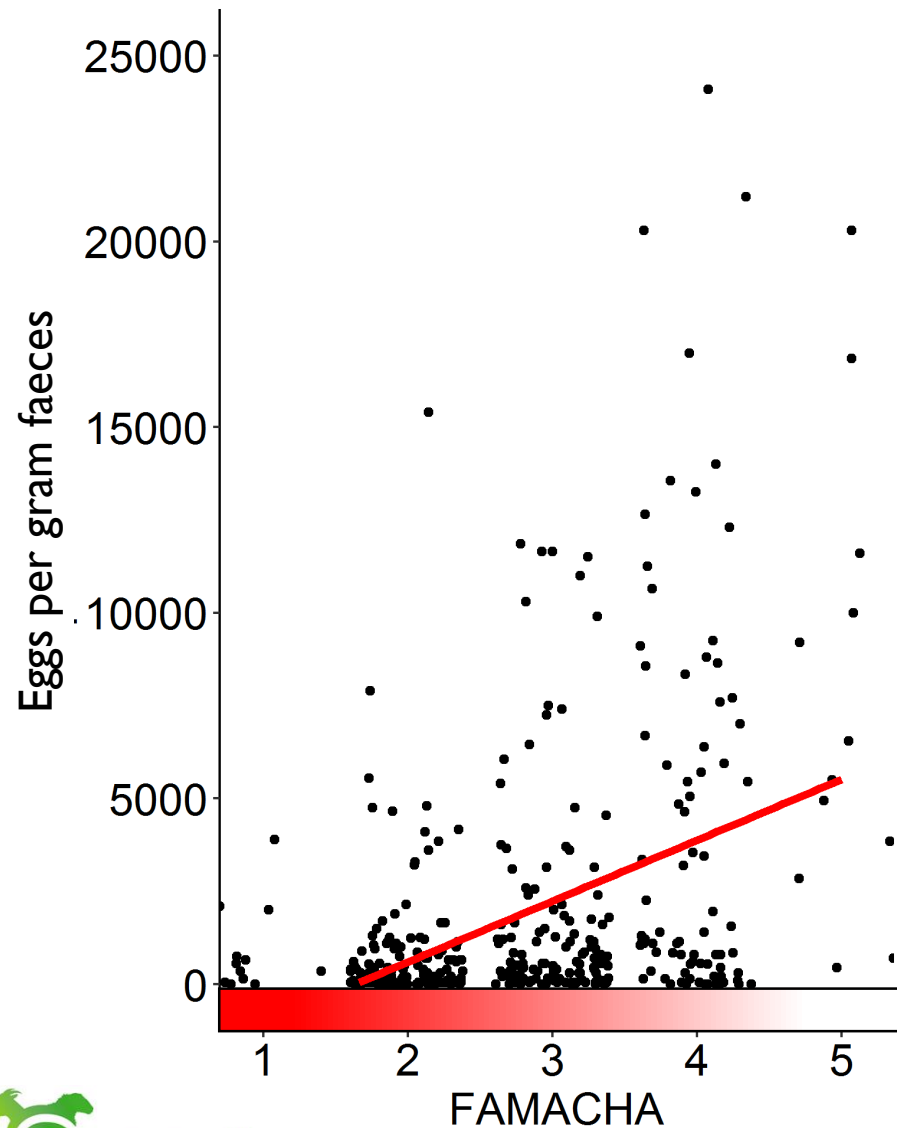
$r = 0.15$

$P < 0.001$

Farms with H.c.  $\geq 50\%$

$r = 0.37$

$P < 0.001$





# Thank you

This work has received funding from the European Union's Horizon 2020 research and innovation programme under Grant Agreement No 772787 (SMARTER). We gratefully thank all sheep farmers who participated in the study and the Swiss Dairy Sheep Farming Cooperative (Schweizerische Milchschaftzucht Genossenschaft) for the provision of milk recording results.